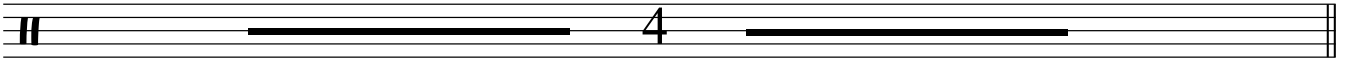
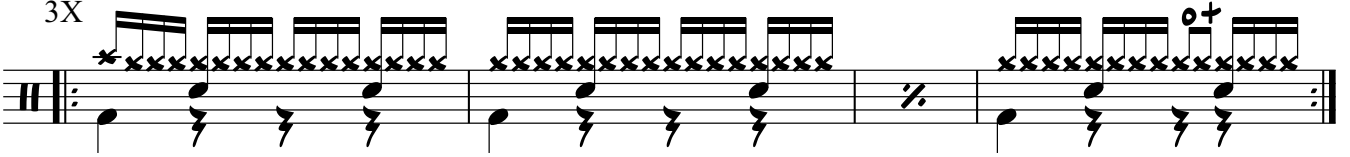


Rockstar - Nickleback

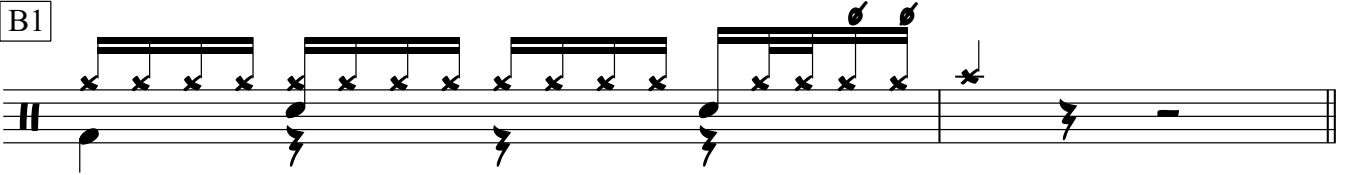
V1



3X

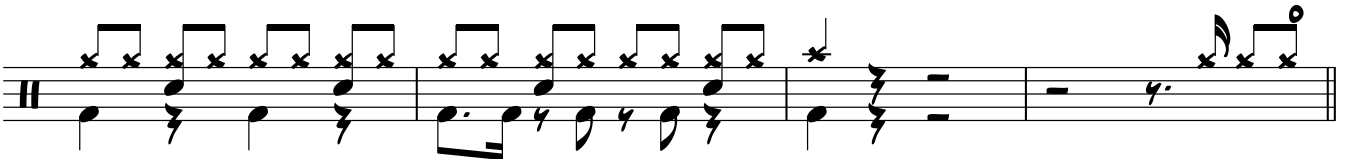


B1

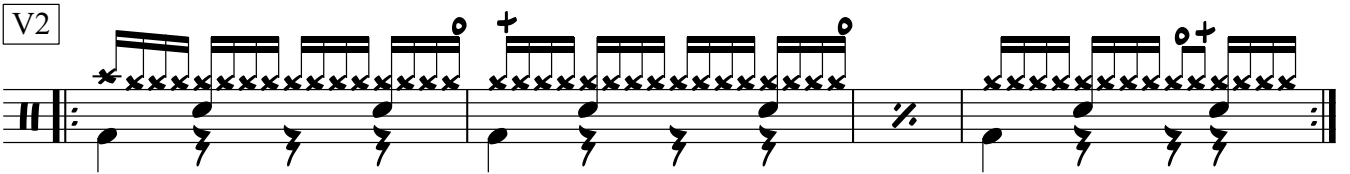


C1

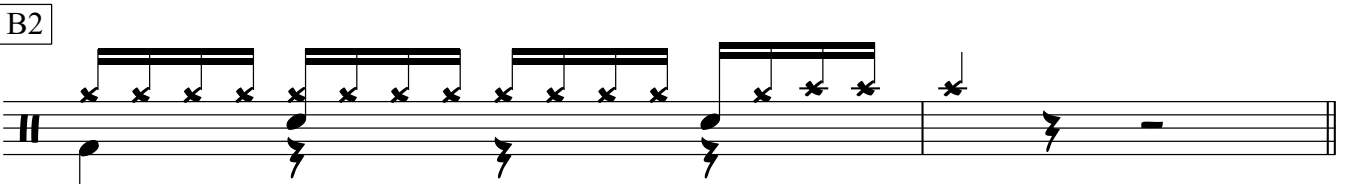
loose hats



V2

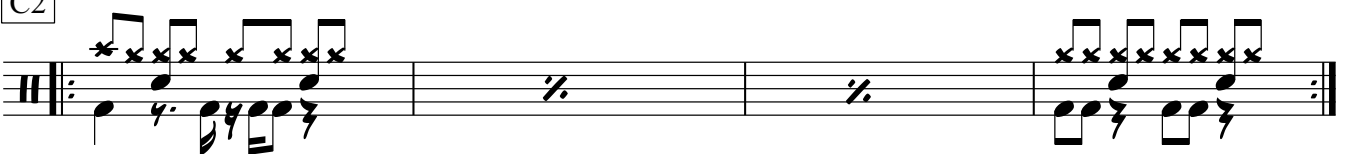


B2



C2

3X loose hats



D

ride



A musical staff with a treble clef. It begins with a 3-measure rest, indicated by a horizontal line with a '3' above it. This is followed by a melodic phrase consisting of six eighth notes: G4, A4, B4, C5, B4, A4.

C3 loose hats

A musical staff with a treble clef. It starts with a box containing 'C3' and the text 'loose hats'. The notation features a sequence of eighth notes with 'x' marks above them, representing hats. The sequence is: G4, A4, B4, C5, B4, A4, G4, F4, E4, D4. There are two repeat signs (double bar lines with dots) in the middle of the staff.

A musical staff with a treble clef and a 4/4 time signature. It contains a melodic phrase of eighth notes with 'x' marks above them: G4, A4, B4, C5, B4, A4, G4, F4, E4, D4. The final two notes, E4 and D4, have a '+' sign above them. The staff concludes with a double bar line and the word 'fine' written below it.